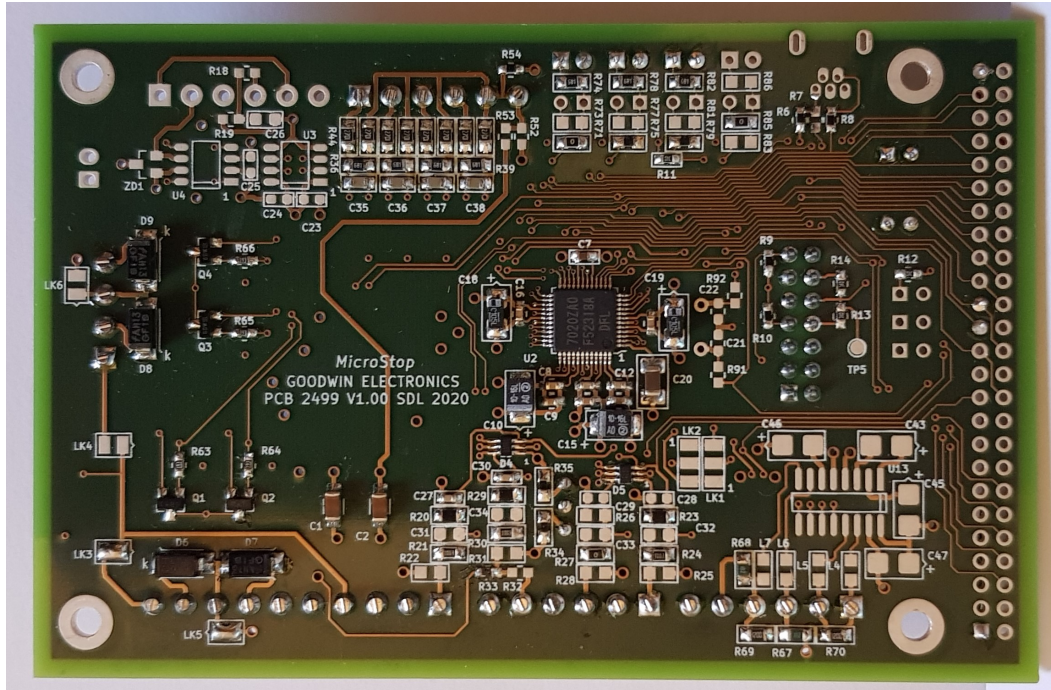


Goodwin Electronics MicroStop Basic Specification

Version 0.2 24th February 2021

Low cost simple single board multi-use microcontroller development platform



General	PCB2499 V1.00 PCB Size 110mm x 72mm
Supply	Input fuse 500mA Recommended Supply 10V to 30V DC, typically 24V, reverse polarity protection, optional over-voltage protection
Comms	1x Serial comms RS232 or RS422 1x Option Canbus
Input/Output	4x Basic analogue inputs, including voltage supply monitor option PCB mounted pot option 4x Digital inputs, bi-directional optocoupled, common Vcc or 0V options, Upto 60V, typically 24V, AC/DC input Option for interrupt input (IRQ7) 4x Digital outputs in 2 banks Options Optocoupler (100mA) fused 250mA DC SSR (400mA) options fused 1A AC/DC Upto 60V, typically 24V DC 4x General purpose IO pins with status LED options
Other	5V output or supply connector option 50 way expansion connector Power LED Option 2 way DIP switch

USB connection

CPU CPU RX231 32bit 48Pin
R5F52318ADFL
RXv2
54MHz max operating frequency
512KB ROM (largest memory in family)
64KB RAM

Limitations NO DAC output as standard

Software Support

Coming Soon Includes: Memobus (Master and Slave)
Display Support (Small TFT, VFD, LCD, 7 Segment)
Keypad decode (grid and individual inc debounce)
Basic Control Functionality (inc Timers)
Flash drive/SD card support